

The Francis Crick Institute

Early Career Group Leader programme

The Francis Crick Institute is a biomedical discovery research institute in central London dedicated to understanding the biology underlying health and disease.

We are core-funded by Cancer Research UK, the UK Medical Research Council, and the Wellcome Trust.



Explore the Crick's multidisciplinary research portfolio at <https://www.crick.ac.uk/research>

We seek creative and innovative individuals to establish new research programmes and/or methods development in:

Computational and theoretical biology

including but not limited to:

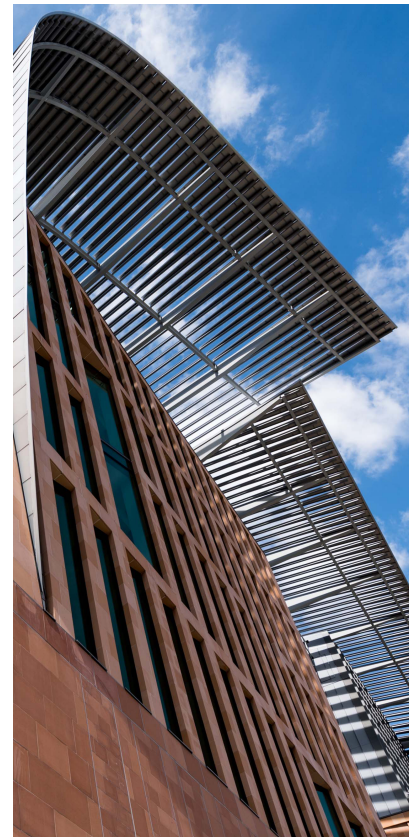
biological data science, informatics, mathematical biology, physics of living systems

The Crick research environment

- 120 multidisciplinary research groups
- [Cutting-edge high performance computing infrastructure](#)
- Close links with the Crick's university partners: Imperial College London, King's College London, and UCL
- 250 graduate students, 400 postdocs

Our Package

- Initial 6-year contract, renewable once, to total 12 years
- Salaries and resources for up to three researchers and two graduate students
- Opportunity to expand through external grant funding
- Support for internal and external collaboration
- Package applies for entire length of contract



Further information on Early Career Group Leaders including current research interests can be found at: <https://www.crick.ac.uk/group-leader-recruitment>

Apply online at: <https://academicrecruitment.crick.ac.uk>

Informal enquiries about the Francis Crick Institute or the application procedure can be made through: group-leader-recruitment@crick.ac.uk

We believe diversity is integral to scientific excellence. We particularly welcome applications from candidates with backgrounds that are currently under-represented in science.

Application by midnight (GMT) on the 10th March 2022 (recruitment symposia to be held in May & June)

